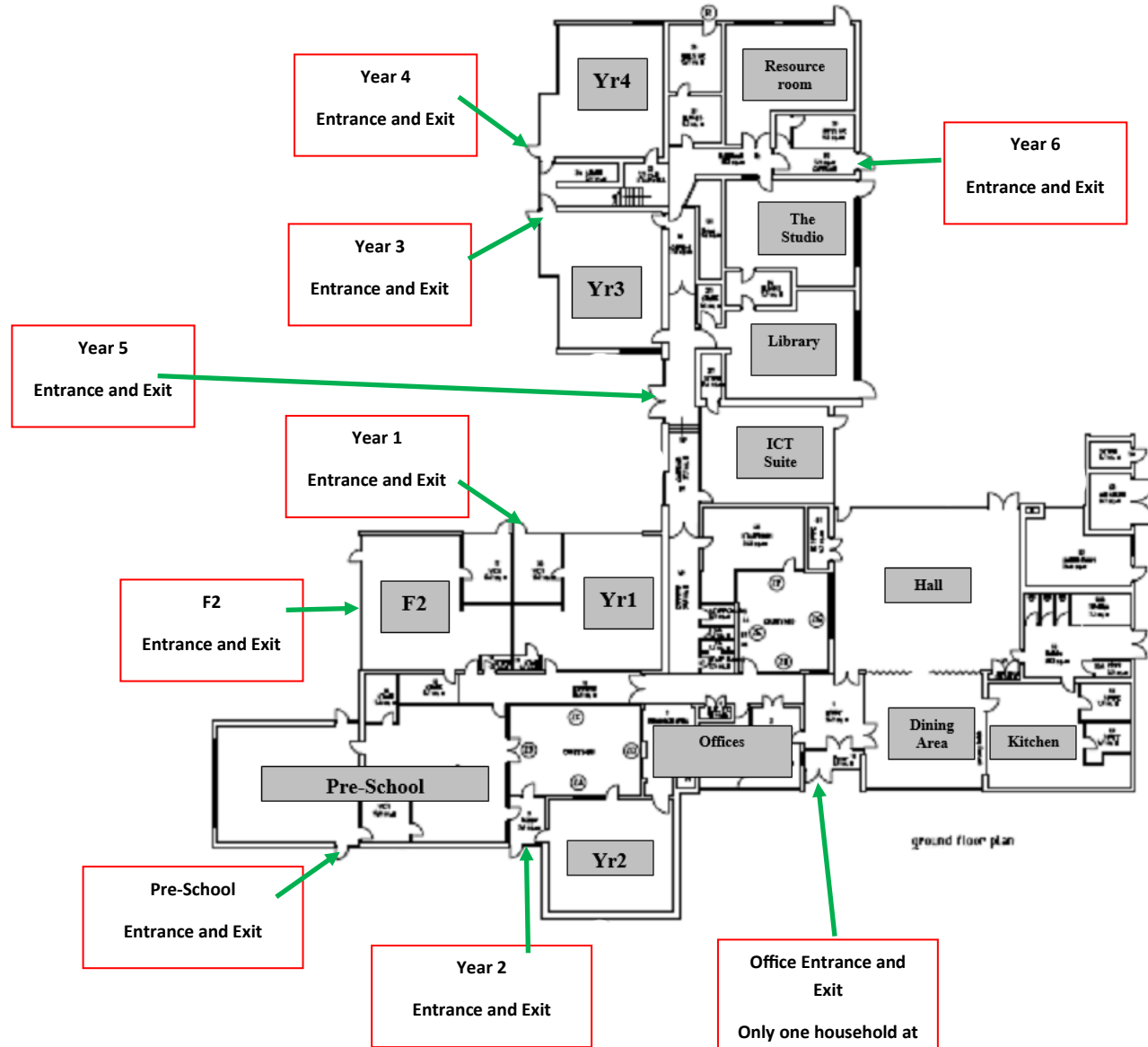
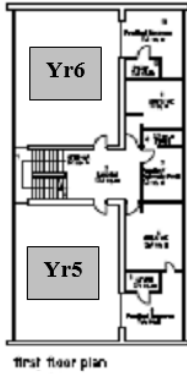
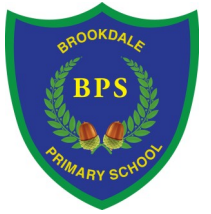


Covid 19, Drop off and Pick up Arrangements Map



Drop off and Pick up Rules

- Only one adult per family to attend drop off and pick up.
- Please leave the school site as soon as your child has been dropped off or picked up.
- No congregating in groups, follow social distancing guidelines.
- No using the school equipment during these periods e.g. climbing frame.



Entrance to school site via Norwood Road



Exit from School Site via Main Gate, Escolme Drive



Office Entrance and Exit
Only one household at a time in this space. Please wait outside for your turn.

Pre-School Entrance and Exit

Year 2 Entrance and Exit

F2 Entrance and Exit

Year 1 Entrance and Exit

Year 5 Entrance and Exit

Year 3 Entrance and Exit

Year 4 Entrance and Exit

Year 6 Entrance and Exit